



taylor[®]
aquarium

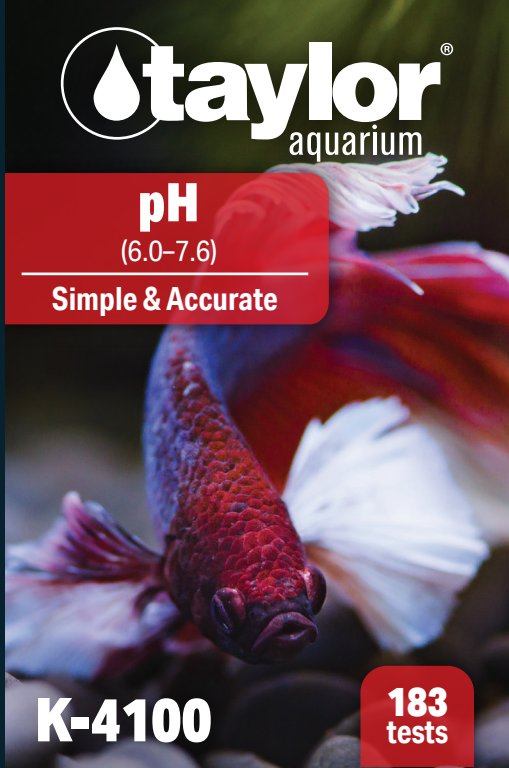
pH

(6.0-7.6)

Simple & Accurate

K-4100

**183
tests**



To order replacement parts and reagents; Call toll-free

800-TEST KIT (800-837-8548) or Visit

www.TaylorAquarium.com

Taylor Water Technologies LLC

410-472-4340

800-TEST KIT (837-8548)

www.TaylorAquarium.com



taylor[®] *the most trusted name in water testing*[®]

pH – pH is a measurement of how acidic or basic water is. A neutral pH is 7.0. Anything above a pH of 7.0 is basic and anything below 7.0 is acidic. A consistent pH level is essential in maintaining a healthy aquarium environment and to reduce stress to fish. The most common changes in pH can be caused by overcrowding, overfeeding, and filtration issues. As a precaution, the pH of the aquarium water should be tested weekly.

Kit Components

R-4000 pH Indicator

R-4001 pH Increase

R-4002 pH Decrease

4023 Test Tube

6021 Rubber Stopper

5263 Instruction

5627 Color Card - pH

WARNING/DANGER



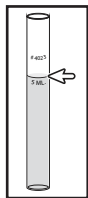
pH Indicator

pH (6.0-7.6)

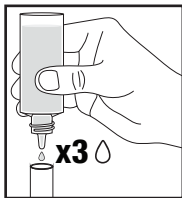
Procedure

Keep Reagents Away From Children. Do not put reagents or samples into aquarium.

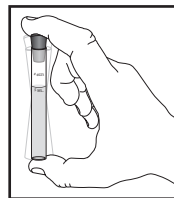
pH Test



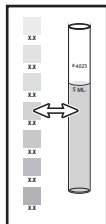
1. Add 5 mL of sample water to a clean test tube (#4023).



2. Add 3 drops of R-4000 pH Indicator. Hold dropper bottle vertically when dispensing the reagent.



3. Secure stopper in test tube and shake to mix.



4. Compare the results to the color card immediately. Make sure to hold the test tube in bright light and fully against the white background for the most accurate reading.

Recommendations

The test is designed for samples with pH between 6.0 and 7.6. Test will not provide accurate results if sample is out of range. If pH results match 6.0 or 7.6, consider that the pH could be below or above those pH values, respectively.

To Adjust pH using pH Increase/Decrease Reagents*:

- To raise the pH of the aquarium, add 4 drops of R-4001 pH Increase per gallon directly to aquarium water.
- To lower the pH of the aquarium, add 4 drops of R-4002 pH Decrease per gallon directly to aquarium water.
- Retest the pH of the aquarium before adding more pH Increase or Decrease.

GENERAL pH PREFERENCES FOR COMMON FRESHWATER FISH

MINNOW, GOURAMI, ANGELFISH, SHRIMP, BARB, DANIO	6.0-8.0
GUPPY	6.0-8.4
GOLDFISH	6.5-7.5
BETTA	6.8-7.5
TETRA	6.8-7.8
PLATY, MOLLY	6.8-8.0
SWORDTAIL, SNAIL	7.0-8.4
AFRICAN CICHLID	7.8-8.6

***Warning:** Any pH change greater than 0.2 within a 24 hour period may put the fish at risk. Proceed with caution if adjusting pH in greater than 0.2 increments.